

**KNAPHEIDE**  
SINCE 1848



FORD  
**KUVcc BODIES**



# KNAPHEIDE KUVcc BODIES

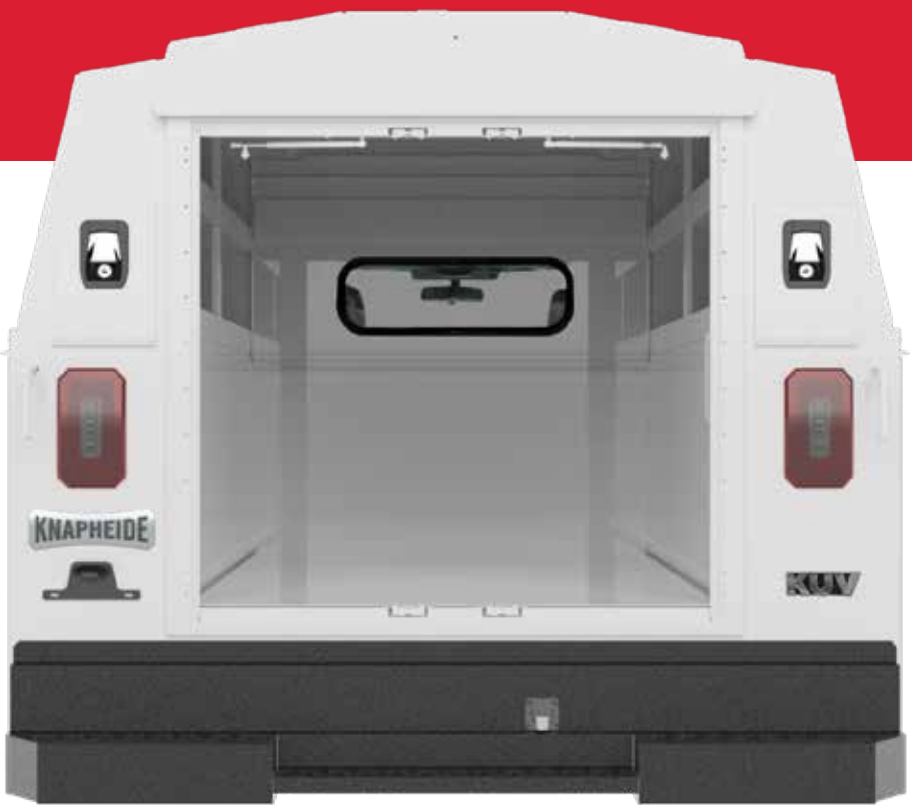


## KUVcc BODIES

The style and function of a KUV, designed for a cab chassis: the KUVcc is built to get the job done.

Providing both enclosed cargo and internal compartment storage, the KUVcc gives you the most efficient and secure storage possible.

Get the use of a truck and function of a KUV all-in-one with the KUVcc.



## KNAPHEIDE UTILITY VAN

Working out of a Knapheide KUVcc keeps you organized and productive. Large perimeter bins are easy to access and keep your parts and tools separated into easy-to-manage spaces.

A spacious cargo storage area with corrugated steel floor for transporting drywall, larger tools, water heater, and oversized items.

## POPULAR VOCATIONS



CONSTRUCTION



PLUMBING



ELECTRICAL



HVACR

## A. DOUBLE paneled doors

made of galvalume steel (14-gauge outer panel, 20-gauge inner panel) are reinforced with internal braces for durability

## B. TWO CONDUIT CHUTES

to transport copper pipes, PVC, and conduit

## C. AUTOMOTIVE-QUALITY, ROTARY-STYLE LATCHES

make opening and closing easy

## D. ELECTRODEPOSITION PRIME-PAINT SYSTEM

provides superior corrosion resistance

## E. FLAT PANEL SPACE

provides rolling billboard to promote business

## F. INTEGRATED LED S/T/T AND B/U, LED STROBE OPTION\*

with (8) selectable patterns and built-in reflectivity for additional safety\*\*

\*Additional wire harness required for strobe lights  
\*\*Covered under 3-year limited warranty

## G. DOUBLE PANEL REAR CARGO DOORS

lock and seal into the body frame. These 20-gauge galvalume steel doors have nitrogen gas struts and slam latches.



COMPARTMENT FEATURES



## DOUBLE-SPRING OVER-CENTER RETAINER

on vertical compartment doors eliminate involuntary swing



## NEOPRENE DOOR SEALS

protect compartments from the weather



## MASTER LOCKING SYSTEM

for piece of mind — locks down all of the side compartments in one move



## CONTINUOUS STAINLESS STEEL HINGES

are pry-proof and corrosion-resistant



## CARGO AREA AND CONDUIT CHUTE LENGTH

8' in 96" bodies  
9' in 108" bodies  
11' in 132" bodies  
13' in 157" bodies  
14' in 169" bodies

## FEATURES NOT SHOWN

**COMPARTMENTS CAN BE LOCKED INDEPENDENTLY**  
for maximum security

**TWO INTERIOR LED DOME LIGHTS**  
in cargo area with light switch inside the cargo doors

**GRAB HANDLE**  
(rear right)

## STANDARD SHELVING



## STREET AND CURB SIDE FRONT VERTICAL COMPARTMENTS

Two adjustable divider shelves and dividers, with a 250-lb. capacity



## STREET AND CURB SIDE FULL HEIGHT REAR VERTICAL COMPARTMENTS

One adjustable divider shelf and dividers, with a 250-lb. capacity



## CURB SIDE HORIZONTAL COMPARTMENT

One adjustable divider shelf and dividers, with a 250-lb. capacity





REQUEST A QUOTE

Visit [knapheide.com/quote](https://knapheide.com/quote) and fill out the form to receive a quote and additional product information.

POPULAR OPTIONS



POWER LOCKS



CODEABLE PADLOCK



UPPER SIDE GLASS



REAR VISION CAMERA



ALUMINUM DRAWERS



SORTIMO



REAR DOOR WINDOWS



CLASS V RECEIVER HITCH



PULL OUT TRAY



POWER LIFTGATE  
Not available on SRW models



LED COMPARTMENT LIGHTING



MECHANICS VISE BRACKET  
Vise sold separately



CORNER MOUNTED CARGO CRANE



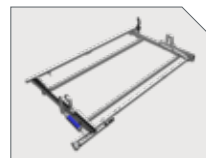
SIDE ACCESS DOOR



3 BOW LADDER RACK



SIDE MOUNT LADDER RACK



DROP-DOWN LADDER RACK  
Prime Design



AERODYNAMIC WIND DEFLECTOR

MODEL OPTIONS

56" CA SRW

MODEL	BODY LENGTH	BODY HEIGHT	BODY WIDTH	COMPARTMENT DEPTH	CLEAR DOOR WIDTH	CLEAR DOOR HEIGHT	INTERIOR CLEAR HEIGHT	BODY WEIGHT
KC96U1478	97.25"	62"	78"	14.5"	44.5"	38.1"	44.5"	1,375 lb.
KC96L1478	97.25"	68"	78"	14.5"	44.5"	41.1"	50.5"	1,506 lb.
KC96M1478	97.25"	78"	78"	14.5"	44.5"	50.5"	60.5"	1,569 lb.

APPLICABLE CHASSIS	CAB	WHEELBASE	GVWR
F3A/F3B	Regular	141.6"	10,100/11,500 lb.
X3A/X3B	Super	164.2"	10,100/11,800 lb.
W3A/W3B	Crew	176"	10,400/12,400 lb.

Note: 10,000 lb. GVWR chassis and under have limited body applications. See local distributor for assistance.

56" CA DRW

MODEL	BODY LENGTH	BODY HEIGHT	BODY WIDTH	COMPARTMENT DEPTH	CLEAR DOOR WIDTH	CLEAR DOOR HEIGHT	INTERIOR CLEAR HEIGHT	BODY WEIGHT
KC96U2094	97.25"	62"	94"	20"	49.5"	38.1"	44.5"	1,607 lb.
KC96L2094	97.25"	68"	94"	20"	49.5"	41.1"	50.5"	1,765 lb.
KC96M2094	97.25"	78"	94"	20"	49.5"	50.5"	60.5"	1,838 lb.
KC96H2094	97.25"	90"	94"	20"	49.5"	63.1"	72.5"	1,958 lb.

APPLICABLE CHASSIS	CAB	WHEELBASE	GVWR
F3C/F3D	Regular	141.6"	13,000/14,000 lb.
X3C/X3D	Super	164.2"	13,000/14,000 lb.
W3C/W3D	Crew	176"	13,000/14,000 lb.

60" CA SRW

MODEL	BODY LENGTH	BODY HEIGHT	BODY WIDTH	COMPARTMENT DEPTH	CLEAR DOOR WIDTH	CLEAR DOOR HEIGHT	INTERIOR CLEAR HEIGHT	BODY WEIGHT
KC108U1478	107.25"	62"	78"	14.5"	44.5"	38.1"	44.5"	1,534 lb.
KC108L1478	107.25"	68"	78"	14.5"	44.5"	41.1"	50.5"	1,674 lb.
KC108M1478	107.25"	78"	78"	14.5"	44.5"	50.5"	60.5"	1,740 lb.

APPLICABLE CHASSIS	CAB	WHEELBASE	GVWR	EXCEPTIONS 10,000 & UNDER
F3E/F3F	Regular	145.3"	9,800/11,500 lb.	Gas 4x2/4x4
X3E/X3F	Super	167.9"	9,800/11,500 lb.	-
W3E/W3F	Crew	179.8"	9,800/11,500 lb.	-

Note: 10,000 lb. GVWR chassis and under have limited body applications. See local distributor for assistance.

MODEL OPTIONS

60” CA DRW

MODEL	BODY LENGTH	BODY HEIGHT	BODY WIDTH	COMPARTMENT DEPTH	CLEAR DOOR WIDTH	CLEAR DOOR HEIGHT	INTERIOR CLEAR HEIGHT	BODY WEIGHT
KC108L2094	107.25"	68"	94"	20"	49.5"	41.1"	50.5"	1,904 lb.
KC108M2094	107.25"	78"	94"	20"	49.5"	50.5"	60.5"	1,983 lb.
KC108H2094	107.25"	90"	94"	20"	49.5"	63.1"	72.5"	2,102 lb.
APPLICABLE CHASSIS		CAB		WHEELBASE		GVWR		
F3G/F3H		Regular		145.3"		13,700/14,000 lb.		
X3G/X3H		Super		167.9"		14,000 lb.		
W3G/W3H		Crew		179.8"		14,000 lb.		
F4G/F4H		Regular		145.3"		15,000/16,500 lb.		
X4G/X4H		Super		167.9"		15,000/16,500 lb.		
W4G/W4H		Crew		179.8"		15,000/16,500 lb.		
F5G/F5H		Regular		145.3"		17,500/19,500 lb.		
X5G/X5H		Super		167.9"		17,500/19,500 lb.		
W5G/W5H		Crew		179.8"		17,500/19,500 lb.		
F600		Regular		145.3"		22,000 lb.		

84” CA DRW

MODEL	BODY LENGTH	BODY HEIGHT	BODY WIDTH	COMPARTMENT DEPTH	CLEAR DOOR WIDTH	CLEAR DOOR HEIGHT	INTERIOR CLEAR HEIGHT	BODY WEIGHT
KC132L2094	133.25"	68"	94"	20"	49.5"	41.1"	50.5"	2,279 lb.
KC132M2094	133.25"	78"	94"	20"	49.5"	50.5"	60.5"	2,357 lb.
KC132H2094	133.25"	90"	94"	20"	49.5"	63.1"	72.5"	2,517 lb.
APPLICABLE CHASSIS		CAB		WHEELBASE		GVWR		
F3G/F3H		Regular		169.3"		14,000 lb.		
F4G/F4H		Regular		169.3"		15,000/16,500 lb.		
X4G/X4H		Super		191.9"		15,000/16,500 lb.		
W4G/W4H		Crew		203.8"		15,000/16,500 lb.		
F5G/F5H		Regular		169.3"		17,500/19,500 lb.		
X5G/X5H		Super		191.9"		17,500/19,500 lb.		
W5G/W5H		Crew		203.8"		17,500/19,500 lb.		
F600		Regular		169.3"		22,000 lb.		

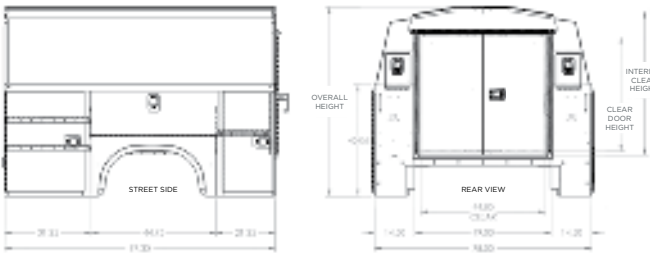
108” CA DRW

MODEL	BODY LENGTH	BODY HEIGHT	BODY WIDTH	COMPARTMENT DEPTH	CLEAR DOOR WIDTH	CLEAR DOOR HEIGHT	INTERIOR CLEAR HEIGHT	BODY WEIGHT
KC157H2094	157.25"	90"	94"	20"	49.5"	63.1"	72.5"	2,962 lb.
APPLICABLE CHASSIS		CAB		WHEELBASE		GVWR		
F4G/F4H		Regular		193.3"		15,000/16,500 lb.		
F5G/F5H		Regular		193.3"		17,500/19,500 lb.		
F600		Regular		193.3"		22,000 lb.		

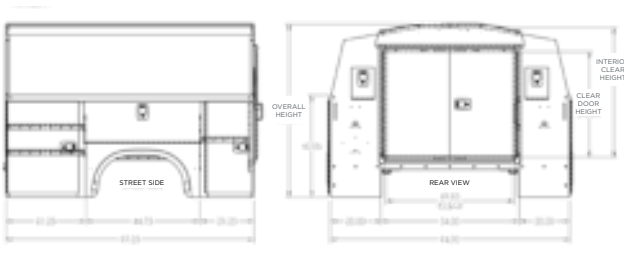
120” CA DRW

MODEL	BODY LENGTH	BODY HEIGHT	BODY WIDTH	COMPARTMENT DEPTH	CLEAR DOOR WIDTH	CLEAR DOOR HEIGHT	INTERIOR CLEAR HEIGHT	BODY WEIGHT
KC169H2094	169.25"	90"	94"	20"	49.5"	63.1"	72.5"	3,213 lb.
APPLICABLE CHASSIS		CAB		WHEELBASE		GVWR		
F4G/F4H		Regular		205.3"		15,000/16,500 lb.		
F5G/F5H		Regular		205.3"		17,500/19,500 lb.		
F600		Regular		205.3"		22,000 lb.		

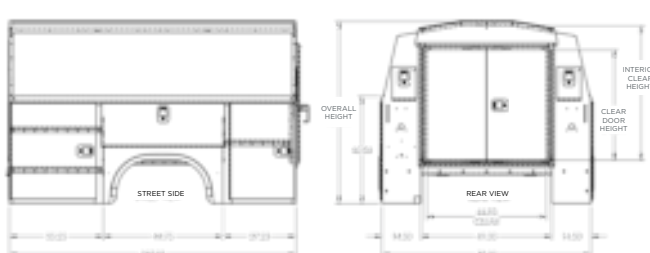
56” CA SRW



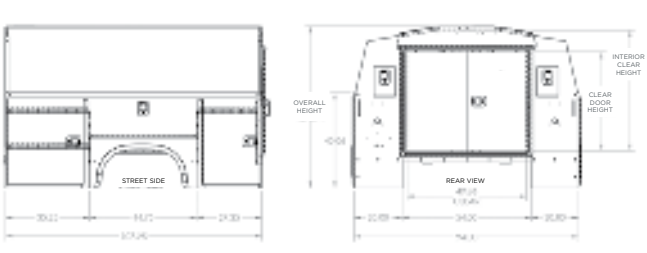
56” CA DRW



60” CA SRW



60” CA DRW



84” CA DRW



108” CA DRW



120” CA DRW





# COMMITMENT TO CORROSION RESISTANCE

Corrosion won't be a concern when you buy quality Knapheide products. To give you the best corrosion protection, we utilize a state-of-the-art, custom-designed, 12-step, SST cathodic electrodeposition finishing system, called "E-Coat."

It bonds prime paint to steel by an electroplating process to give you a superior coat of primer, resulting in better corrosion protection compared to spraying methods.

This system allows us to create products with the highest level of corrosion resistance available.



FOLLOW US  
LIKE US  
TAG US



## SIX YEAR, LIMITED TIME WARRANTY



**NO RUST  
THROUGH**



**DOOR HINGES  
WILL NOT FAIL OR  
COME OFF BODY**



**LATCHES AND LOCK  
CYLINDERS WILL NOT  
FAIL TO OPERATE**



**SHELVES WILL NOT  
BEND UNDER MAX.  
LOAD OF 250 LBS.**

TO LEARN MORE VISIT  
[www.knapheide.com/warranty](http://www.knapheide.com/warranty)



## NEVER SETTLE

If you are going to be a leader, it takes more than building a high-quality product. It means never being totally satisfied with that product, no matter how high quality it may be. It requires constant vigilance and a willingness to take a chance on something new. And it means exceeding expectations every time. As the industry changes, one thing never will—our commitment to making customers like you as productive and efficient as possible. We know you don't settle, and we don't either. That's why we want you never to settle for anything less than Knapheide on the back of your truck.

**KNAPHEIDE. NEVER SETTLE.**



The Knapheide Manufacturing Company  
1848 Westphalia Strasse | Quincy, IL 62305  
**217-222-7131**  
**[www.knapheide.com](http://www.knapheide.com)**