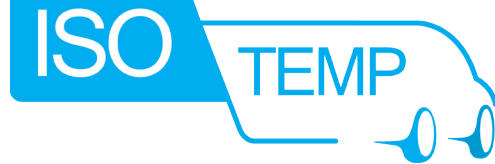


## IsoTemp Solution on Ram ProMaster



### Fully Integrated & Climate Controlled Cargo Isolation System



Customizable with up to 3 separate  
temperature controlled environments  
from -5°F to 60°F

Ideal for applications including:

- Food Delivery
- Biomedical Transport
- Catering

\*HACCP Certified



### STANDARD EQUIPMENT

- Modular, insulated fiberglass panels
- Non-slip floor
- Fully insulated doors
- Floor drain
- Interior lighting (LED ceiling light)

### PRODUCT FEATURES

- Modular kit assembly for high volume upfits
- Best-in-class thermal insulation
- Isolated cargo space reduces odors and vapors from entering occupant compartment
- Fiberglass panels are leak-free and easy to clean
- Available for freight re-entry

### SPECIFICATIONS

Wheelbase	Roof Variants	Cargo Area Volume	Inner Length	Inner Width	Inner Height
136	High (H2)	272 cubic ft.	111.2"	63.8"	69.3"
159	High (H2)	328.4 cubic ft.	134.2"	63.8"	69.3"
159 Extended	High (H2)	363.8 cubic ft.	145.6"	63.8"	69.3"

\*Full range of insulation solutions as above mentioned for units equipped with right, left sliding door or both

### CLIMATE CONTROL SYSTEM

- Industry standard cooling units available from multiple manufacturers

## IsoTemp Solution on Ram ProMaster

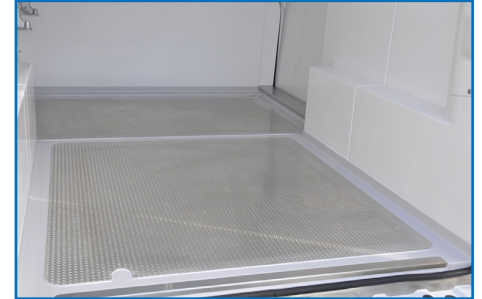
### OPTIONS



- Optional side shelving



- Clear PVC strip curtains
- Highly thermo-protective double joint sealing (standard)



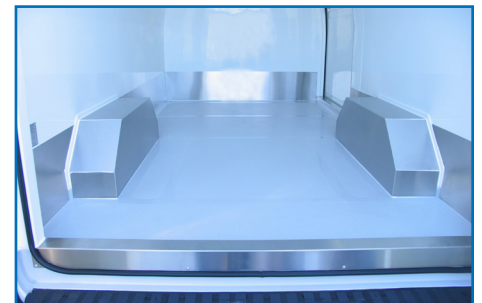
- Extra anti-slip aluminum floor



- Stainless steel edge protection
- Floor drain (standard)



- Side wall lashing rails



- Aluminum side protection covering the wheelwells



- Fixed rear foot step



- Extra barn door highly recommended for frozen goods transport