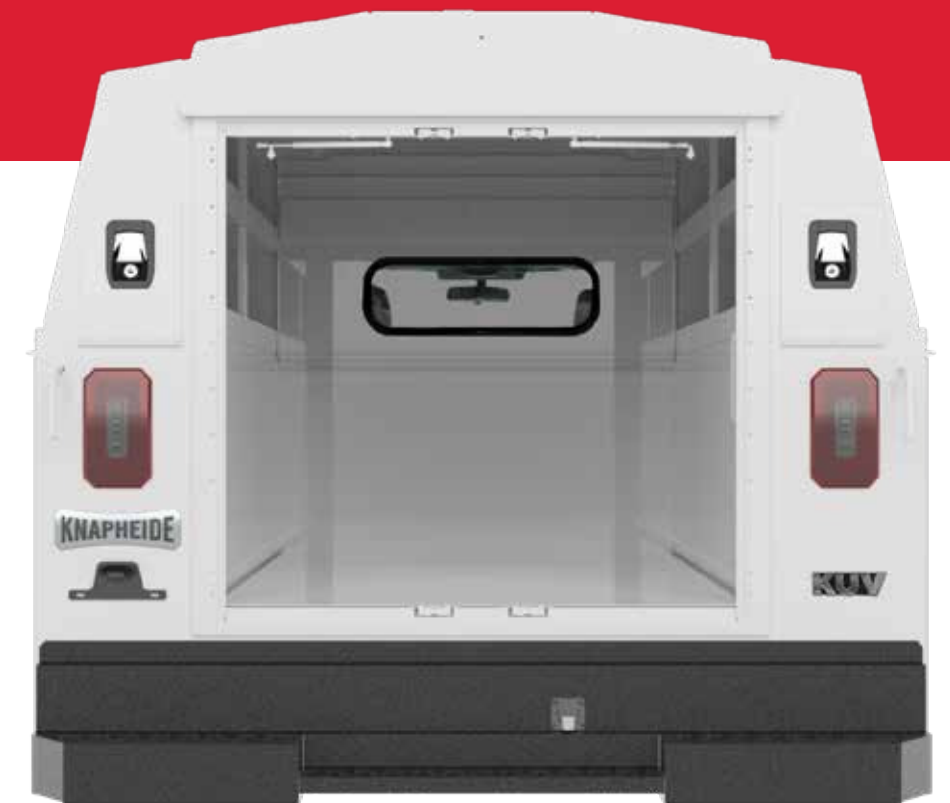


KNAPHEIDE
SINCE 1848



RAM
KUVcc BODIES

KNAPHEIDE KUVcc BODIES



KNAPHEIDE UTILITY VAN

Working out of a Knapheide KUVcc keeps you organized and productive. Large perimeter bins are easy to access and keep your parts and tools separated into easy-to-manage spaces.

A spacious cargo storage area with corrugated steel floor for transporting drywall, larger tools, water heater, and oversized items.

KUVcc BODIES

The style and function of a KUV, designed for a cab chassis: the KUVcc is built to get the job done.

Providing both enclosed cargo and internal compartment storage, the KUVcc gives you the most efficient and secure storage possible.

Get the use of a truck and function of a KUV all-in-one with the KUVcc.

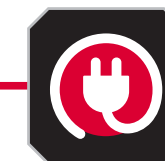
POPULAR VOCATIONS



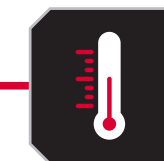
CONSTRUCTION



PLUMBING



ELECTRICAL



HVACR

A. DOUBLE PANELED DOORS

made of galvanized steel (14-gauge outer panel, 20-gauge inner panel) are reinforced with internal braces for durability

B. TWO CONDUIT CHUTES

to transport copper pipes, PVC, and conduit

C. AUTOMOTIVE-QUALITY, ROTARY-STYLE LATCHES

make opening and closing easy

D. ELECTRODEPOSITION PRIME-PAINT SYSTEM

provides superior corrosion resistance

E. FLAT PANEL SPACE

provides rolling billboard to promote business

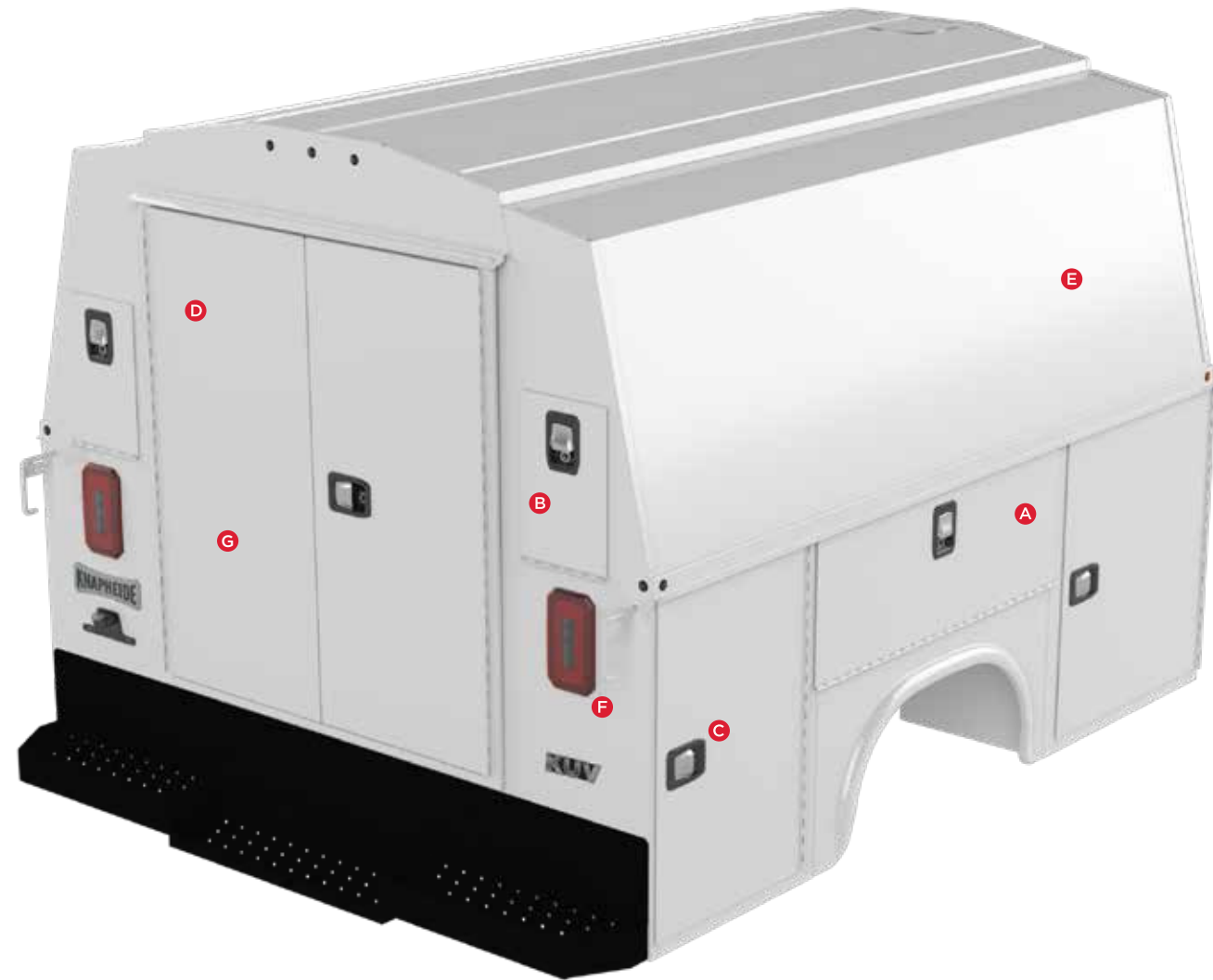
F. INTEGRATED LED S/T/T AND B/U, LED STROBE OPTION*

with (8) selectable patterns and built-in reflectivity for additional safety**

*Additional wire harness required for strobe lights
**Covered under 3-year limited warranty

G. DOUBLE PANEL REAR CARGO DOORS

lock and seal into the body frame. These 20-gauge galvanized steel doors have nitrogen gas struts and slam latches.



CARGO AREA AND CONDUIT CHUTE LENGTH

- 8' in 96" bodies
- 9' in 108" bodies
- 11' in 132" bodies
- 13' in 157" bodies
- 14' in 169" bodies

COMPARTMENT FEATURES



DOUBLE-SPRING OVER-CENTER RETAINER

on vertical compartment doors eliminate involuntary swing



NEOPRENE DOOR SEALS

protect compartments from the weather



MASTER LOCKING SYSTEM

for piece of mind — locks down all of the side compartments in one move



CONTINUOUS STAINLESS STEEL HINGES

are pry-proof and corrosion-resistant

STANDARD SHELVING



STREET AND CURB SIDE FRONT VERTICAL COMPARTMENTS

Two adjustable divider shelves and dividers, with a 250-lb. capacity



STREET AND CURB SIDE FULL HEIGHT REAR VERTICAL COMPARTMENTS

One adjustable divider shelf and dividers, with a 250-lb. capacity



CURB SIDE HORIZONTAL COMPARTMENT

One adjustable divider shelf and dividers, with a 250-lb. capacity

FEATURES NOT SHOWN

COMPARTMENTS CAN BE LOCKED INDEPENDENTLY
for maximum security

TWO INTERIOR LED DOME LIGHTS
in cargo area with light switch inside the cargo doors

GRAB HANDLE
(rear right)

REQUEST A QUOTE



Visit knapheide.com/quote and fill out the form to receive a quote and additional product information.

POPULAR OPTIONS



POWER LOCKS



CODEABLE PADLOCK



UPPER SIDE GLASS



REAR VISION CAMERA



ALUMINUM DRAWERS



SORTIMO



REAR DOOR WINDOWS



CLASS V RECEIVER HITCH



PULL OUT TRAY



POWER LIFTGATE
Not available on SRW models



LED COMPARTMENT LIGHTING



MECHANICS VISE BRACKET
Vise sold separately



CORNER MOUNTED CARGO CRANE



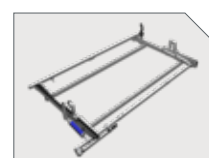
SIDE ACCESS DOOR



3 BOW LADDER RACK



SIDE MOUNT LADDER RACK



DROP-DOWN LADDER RACK
Prime Design



AERODYNAMIC WIND DEFLECTOR

MODEL OPTIONS

56" CA SRW

MODEL	BODY LENGTH	BODY HEIGHT	BODY WIDTH	COMPARTMENT DEPTH	CLEAR DOOR WIDTH	CLEAR DOOR HEIGHT	INTERIOR CLEAR HEIGHT	BODY WEIGHT
KC96U1478	97.25"	62"	78"	14.5"	44.5"	38.1"	44.5"	1,375 lb.
KC96L1478	97.25"	68"	78"	14.5"	44.5"	41.1"	50.5"	1,506 lb.
KC96M1478	97.25"	78"	78"	14.5"	44.5"	50.5"	60.5"	1,569 lb.

APPLICABLE CHASSIS	CAB	WHEELBASE	GVWR
2500	Regular - Gas	140.5"	9,000/10,000 lb.
3500	Regular	140.5"	10,100/11,500 lb.
3500	Crew	169.5"	11,000/12,300 lb.

Note: 10,000 lb. GVWR chassis and under have limited body applications. See local distributor for assistance.

56" CA DRW

MODEL	BODY LENGTH	BODY HEIGHT	BODY WIDTH	COMPARTMENT DEPTH	CLEAR DOOR WIDTH	CLEAR DOOR HEIGHT	INTERIOR CLEAR HEIGHT	BODY WEIGHT
KC96U2094	97.25"	62"	94"	20"	49.5"	38.1"	44.5"	1,607 lb.
KC96L2094	97.25"	68"	94"	20"	49.5"	41.1"	50.5"	1,765 lb.
KC96M2094	97.25"	78"	94"	20"	49.5"	50.5"	60.5"	1,838 lb.
KC96H2094	97.25"	90"	94"	20"	49.5"	63.1"	72.5"	1,958 lb.

APPLICABLE CHASSIS	CAB	WHEELBASE	GVWR
3500	Regular	140.5"	13,300/14,000 lb.
3500	Crew	169.5"	13,300/14,000 lb.

60" CA SRW

MODEL	BODY LENGTH	BODY HEIGHT	BODY WIDTH	COMPARTMENT DEPTH	CLEAR DOOR WIDTH	CLEAR DOOR HEIGHT	INTERIOR CLEAR HEIGHT	BODY WEIGHT
KC108U1478	107.25"	62"	78"	14.5"	44.5"	38.1"	44.5"	1,534 lb.
KC108L1478	107.25"	68"	78"	14.5"	44.5"	41.1"	50.5"	1,674 lb.
KC108M1478	107.25"	78"	78"	14.5"	44.5"	50.5"	60.5"	1,740 lb.

APPLICABLE CHASSIS	CAB	WHEELBASE	GVWR
3500	Regular	143.5"	10,000/12,000 lb.
3500	Crew	172.4"	10,000/12,000 lb.

Note: 10,000 lb. GVWR chassis and under have limited body applications. See local distributor for assistance.

MODEL OPTIONS

60" CA DRW

MODEL	BODY LENGTH	BODY HEIGHT	BODY WIDTH	COMPARTMENT DEPTH	CLEAR DOOR WIDTH	CLEAR DOOR HEIGHT	INTERIOR CLEAR HEIGHT	BODY WEIGHT
KC108L2094	107.25"	68"	94"	20"	49.5"	41.1"	50.5"	1,904 lb.
KC108M2094	107.25"	78"	94"	20"	49.5"	50.5"	60.5"	1,983 lb.
KC108H2094	107.25"	90"	94"	20"	49.5"	63.1"	72.5"	2,102 lb.

APPLICABLE CHASSIS	CAB	WHEELBASE	GVWR
3500	Regular	143.5"	13,500/14,000 lb.
3500	Crew	172.4"	13,500/14,000 lb.
4500	Regular	144.5"	15,000/16,500 lb.
4500	Crew	173.4"	15,000/16,500 lb.
5500	Regular	144.5"	18,000/19,000 lb.
5500	Crew	173.4"	18,000/19,000 lb.

84" CA DRW

MODEL	BODY LENGTH	BODY HEIGHT	BODY WIDTH	COMPARTMENT DEPTH	CLEAR DOOR WIDTH	CLEAR DOOR HEIGHT	INTERIOR CLEAR HEIGHT	BODY WEIGHT
KC132L2094	133.25"	68"	94"	20"	49.5"	41.1"	50.5"	2,279 lb.
KC132M2094	133.25"	78"	94"	20"	49.5"	50.5"	60.5"	2,357 lb.
KC132H2094	133.25"	90"	94"	20"	49.5"	63.1"	72.5"	2,517 lb.

APPLICABLE CHASSIS	CAB	WHEELBASE	GVWR
3500	Regular	167.5"	13,500/14,000 lb.
4500	Regular	168.5"	15,000/16,500 lb.
4500	Crew	197.4"	15,000/16,500 lb.
5500	Regular	168.5"	18,000/19,500 lb.
5500	Crew	197.5"	18,000/19,500 lb.

108" CA DRW

MODEL	BODY LENGTH	BODY HEIGHT	BODY WIDTH	COMPARTMENT DEPTH	CLEAR DOOR WIDTH	CLEAR DOOR HEIGHT	INTERIOR CLEAR HEIGHT	BODY WEIGHT
KC157H2094	157.25"	90"	94"	20"	49.5"	63.1"	72.5"	2,962 lb.

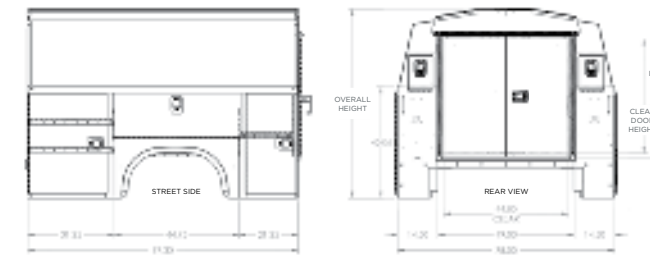
APPLICABLE CHASSIS	CAB	WHEELBASE	GVWR
4500	Regular	192.2"	15,000/16,500 lb.
5500	Regular	192.2"	18,000/19,500 lb.

120" CA DRW

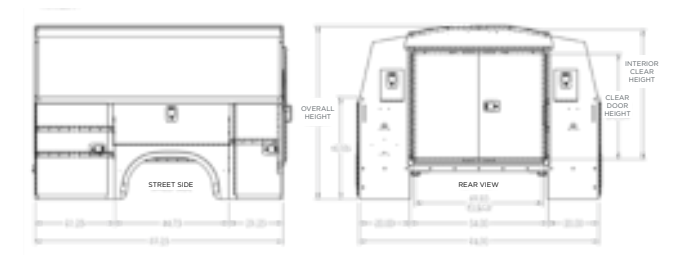
MODEL	BODY LENGTH	BODY HEIGHT	BODY WIDTH	COMPARTMENT DEPTH	CLEAR DOOR WIDTH	CLEAR DOOR HEIGHT	INTERIOR CLEAR HEIGHT	BODY WEIGHT
KC169H2094	169.25"	90"	94"	20"	49.5"	63.1"	72.5"	3,213 lb.

APPLICABLE CHASSIS	CAB	WHEELBASE	GVWR
4500	Regular	204.2"	15,000/16,500 lb.
5500	Regular	204.2"	18,000/19,500 lb.

56" CA SRW



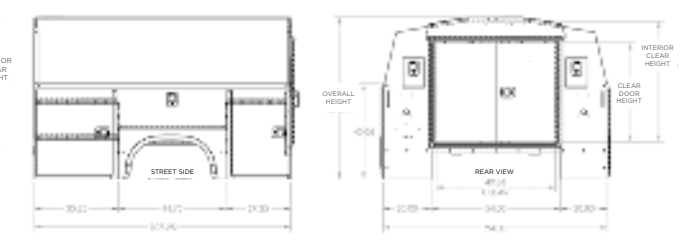
56" CA DRW



60" CA SRW



60" CA DRW



84" CA DRW



108" CA DRW



120" CA DRW



COMMITMENT TO CORROSION RESISTANCE

Corrosion won't be a concern when you buy quality Knapheide products. To give you the best corrosion protection, we utilize a state-of-the-art, custom-designed, 12-step, SST cathodic electrodeposition finishing system, called "E-Coat."

It bonds prime paint to steel by an electroplating process to give you a superior coat of primer, resulting in better corrosion protection compared to spraying methods.

This system allows us to create products with the highest level of corrosion resistance available.



FOLLOW US
LIKE US
TAG US



SIX YEAR, LIMITED TIME WARRANTY



**NO RUST
THROUGH**



**DOOR HINGES
WILL NOT FAIL OR
COME OFF BODY**



**LATCHES AND LOCK
CYLINDERS WILL NOT
FAIL TO OPERATE**



**SHELVES WILL NOT
BEND UNDER MAX.
LOAD OF 250 LBS.**

TO LEARN MORE VISIT
www.knapheide.com/warranty



NEVER SETTLE

If you are going to be a leader, it takes more than building a high-quality product. It means never being totally satisfied with that product, no matter how high quality it may be. It requires constant vigilance and a willingness to take a chance on something new. And it means exceeding expectations every time. As the industry changes, one thing never will—our commitment to making customers like you as productive and efficient as possible. We know you don't settle, and we don't either. That's why we want you never to settle for anything less than Knapheide on the back of your truck.

KNAPHEIDE. NEVER SETTLE.



The Knapheide Manufacturing Company
1848 Westphalia Strasse | Quincy, IL 62305
217-222-7131
www.knapheide.com